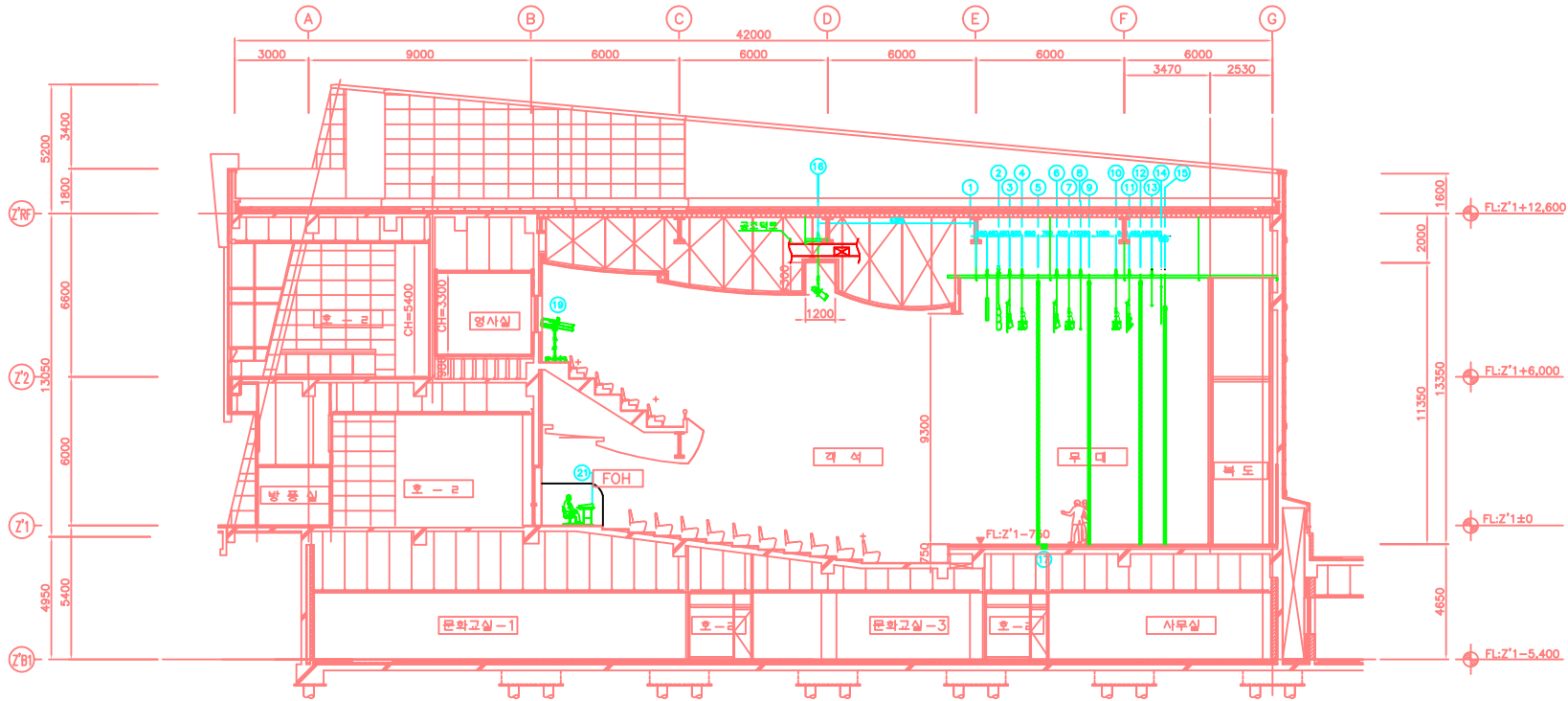


NOTE



무대장치 단면 배치도
S: 1/100

-LIST-

| NO. | SPECIFICATION | DIMENSION | Q'TY | REMARK | NO. | SPECIFICATION | DIMENSION | Q'TY | REMARK |
|-----|------------------------------|----------------------------------|--------|-------------|-----|------------------------------|------------------------------|--------|-------------|
| 1 | PLACARD BATTEN | 14,800L, 1.5KW x 4P | 1 SET | UP/DN | 14 | HEAD SCREEN | 17,200W x 1,500H | 1 SET | |
| 2 | CONTOUR CURTAIN | 18,000Wx11,000H / 0.75KWx4Px3SET | 1 SET | 3 변형 | 15 | SCREEN COVER CURTAIN | 17,200W x 10,000H, 0.4W x 4P | 1 SET | OP/CL |
| 3 | NO.1 BODER LIGHT BATTEN | 14,800L, 2.2KW x 6P | 1 SET | UP/DN | 16 | CEILING LIGHT BATTEN | 14,800L, 2.2KW x 6P | 1 SET | UP/DN |
| 4 | NO.1 SUSPENSION LIGHT BATTEN | 14,800L, 2.2KW x 6P | 1 SET | UP/DN | 17 | NO.1 FLOOR POCKET | 30A x 3WAY | 2 SETS | STAGE FLOOR |
| 5 | NO.1 SIDE CURTIAN | 2,500W x 10,500H | 2 SET | MANUAL TYPE | 19 | FOLLOW SPOT LIGHT | MSR 1.2KW | 1 SET | |
| 6 | NO.2 BODER LIGHT BATTEN | 14,800L, 2.2KW x 6P | 1 SET | UP/DN | 20 | DIMMER & MOTOR CONTROL PANEL | DIM 68, RD 12, MOTOR 15 | 2 변 | |
| 7 | NO.2 SUSPENSION LIGHT BATTEN | 14,800L, 2.2KW x 6P | 1 SET | UP/DN | 21 | COMPUTER CONSOLE | 48/96CH' | 1 SET | |
| 8 | SET BATTEN | 14,800L, 1.5KW x 4P | 1 SET | UP/DN | | | | | |
| 9 | DRAW CURTIAN | 18,800W x 10,500H / 0.4KW x 4P | 1 SET | OP/CL | | | | | |
| 10 | NO.3 SUSPENSION LIGHT BATTEN | 14,800L, 2.2KW x 6P | 1 SET | UP/DN | | | | | |
| 11 | UPPER LIGHT BATTEN | 14,800L, 2.2KW x 6P | 1 SET | UP/DN | | | | | |
| 12 | NO.2 SIDE CURTIAN | 2,500W x 10,500H | 2 SETS | MANUAL TYPE | | | | | |
| 13 | FLAG BATTEN | 14,800L, 1.5KW x 4P | 1 SET | UP/DN | | | | | |

NO. DATE DESCRIPTION 13B

REVISIONS

CORE ARCHITECTS

ARCHITECTURE PLANNING ENGINEERING
(주)코어플래닝엔지니어링사무소
TEL. (91)(02)562-0788, FAX. (02)562-0728

PROJECT TITLE

부천시 오정구청사 신축공사

NAME OF DRAWING

문화센터 무대장치 단면 배치도

DATE

2002. 12.

SCALE

1 / 100

DRAWN BY

APPROVED BY

DRAWING NO.

E - 103

FILE NAME

PROJECT NUMBER

02TA004